

2019

2011 12 15

:L0140A246020001

50,000

40,000

80%

10,000

20%

,

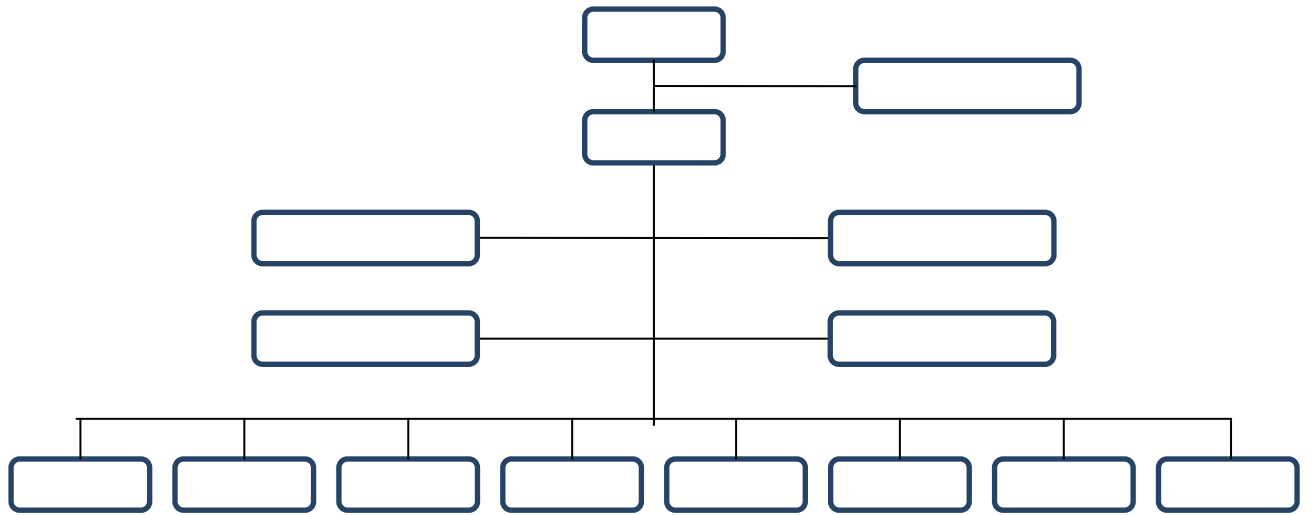
9146000058393623X5

115

23

1.

2.



3.

4.

1

,

()

2

2019	12	31		637,964.36
104,234.81	,		39,272.44	245,537.83
	156,055.90	,		50,200.00
570,176.04	,		566,314.55	67,788.33
	50,000.00	2019		15,681.49
	11,853.93		8,889.12	

2	/	100%	-	
3	/	100%	63.79%	
4	/	40%	39.90%	
5	/	30%	29.89%	
6	/	20%	0.06%	

2019 12 31

93,411.60

50%

74,000

2020 4 13